



# CD73 Polyclonal Antibody

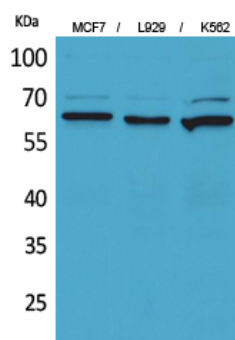
<b>Catalog No</b>	YP-Ab-13992
<b>Isotype</b>	IgG
<b>Reactivity</b>	Human;Rat;Mouse;
<b>Applications</b>	WB;IHC;IF;ELISA
<b>Gene Name</b>	NT5E
<b>Protein Name</b>	5'-nucleotidase
<b>Immunogen</b>	The antiserum was produced against synthesized peptide derived from the Internal region of human NT5E. AA range:431-480
<b>Specificity</b>	CD73 Polyclonal Antibody detects endogenous levels of CD73 protein.
<b>Formulation</b>	Liquid in PBS containing 50% glycerol, 0.5% BSA and 0.02% sodium azide.
<b>Source</b>	Polyclonal, Rabbit,IgG
<b>Purification</b>	The antibody was affinity-purified from rabbit antiserum by affinity-chromatography using epitope-specific immunogen.
<b>Dilution</b>	WB: 1/500 - 1/2000. IHC-p: 1:100-300 ELISA: 1/20000.. IF 1:50-200
<b>Concentration</b>	1 mg/ml
<b>Purity</b>	≥90%
<b>Storage Stability</b>	-20°C/1 year
<b>Synonyms</b>	NT5E; NT5; NTE; 5'-nucleotidase; 5'-NT; Ecto-5'-nucleotidase; CD73
<b>Observed Band</b>	68kD
<b>Cell Pathway</b>	Cell membrane ; Lipid-anchor, GPI-anchor .
<b>Tissue Specificity</b>	Leukocyte,Liver,Placenta,Skin,
<b>Function</b>	catalytic activity:A 5'-ribonucleotide + H(2)O = a ribonucleoside + phosphate.,cofactor:Zinc.,disease:There is a decrease in the activity of NT5 in B-cell chronic lymphocytic leukemia.,function:Hydrolyzes extracellular nucleotides into membrane permeable nucleosides.,similarity:Belongs to the 5'-nucleotidase family.,subunit:Homodimer; disulfide-linked.,
<b>Background</b>	The protein encoded by this gene is a plasma membrane protein that catalyzes the conversion of extracellular nucleotides to membrane-permeable nucleosides. The encoded protein is used as a determinant of lymphocyte differentiation. Defects in this gene can lead to the calcification of joints and arteries. Two transcript variants encoding different isoforms have been found for this gene.[provided by RefSeq, Mar 2011],
<b>matters needing attention</b>	Avoid repeated freezing and thawing!



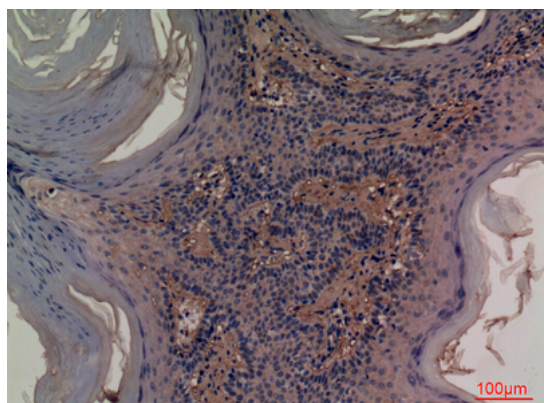
## Usage suggestions

This product can be used in immunological reaction related experiments. For more information, please consult technical personnel.

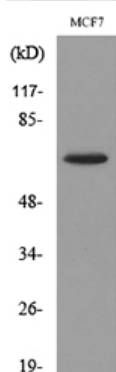
## Products Images



Western Blot analysis of MCF7, L929, K562 cells using CD73 Polyclonal Antibody. Secondary antibody(catalog#:RS0002) was diluted at 1:20000



Immunohistochemical analysis of paraffin-embedded human-skin, antibody was diluted at 1:100



Western blot analysis of lysate from MCF7 cells, using NT5E Antibody.